



INDOFINE Chemical Company, Inc.

121 Stryker Lane, Bldg. 30, Suite 1 • Hillsborough, NJ 08844 • U.S.A.

Phone: (908) 359-6778 • FAX: (908) 359-1179

website: www.indofinechemical.com

e-mail: chemical@indofinechemical.com

CERTIFICATE OF ANALYSIS

Catalog Number: 06-1126

Product Name: **ROSAVIN**
(Rosavidin)

CAS Number: [84954-92-7]

Lot Number: 2205674

Chemical Formula: C₂₀H₂₈O₁₀

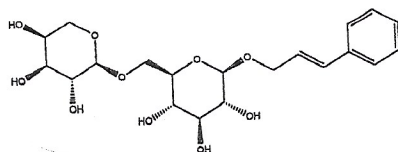
Molecular Weight: 428.43

Appearance: Off-white powder

Water Content: 0.09%

Storage: Store in a cool, dry place

Purity(HPLC): 99.31%



Prepared by:
Ramesh Mandadi
Ramesh Mandadi
Director of Operations

Reviewed and Approved by:
Sujata Moton
Sujata Moton
VP



INDOFINE Chemical Company, Inc.

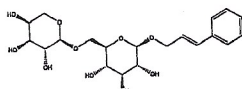
121 Stryker Lane, Bldg. 30, Suite 1 • Hillsborough, NJ 08844 • U.S.A.

Phone: (908) 359-6778 • FAX: (908) 359-1179

website: www.indofinechemical.com

e-mail: chemical@indofinechemical.com

HPLC ANALYSIS

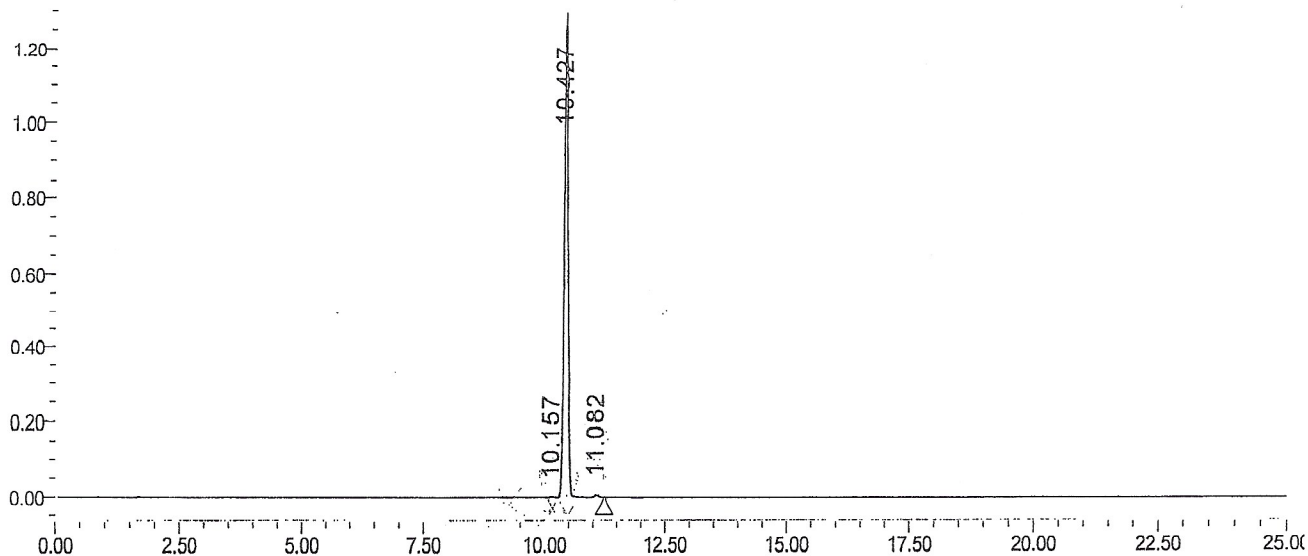


Catalog No.: 06-1126
Product Name: Rosavin
Lot No.: 2205674

SAMPLE INFORMATION

Sample Name:	Rosavin	Acquired By:	
Sample Type:		Sample Set Name	
Vial:	25	Acq. Method Set:	Rosavin
Injection #:	1	Processing Method	Samples
Injection Volume:	10.00 ul		
Run Time:	25.0 Minutes		

Auto-Scaled Chromatogram



Peak Results

	RT	Area	% Area	Height	Plate Count	Resolution
1	10.157	7762	0.11	1493	82468.36	
2	10.427	6829783	99.31	1266045	85806.57	1.88
3	11.082	39456	0.57	6977	85595.98	4.38